



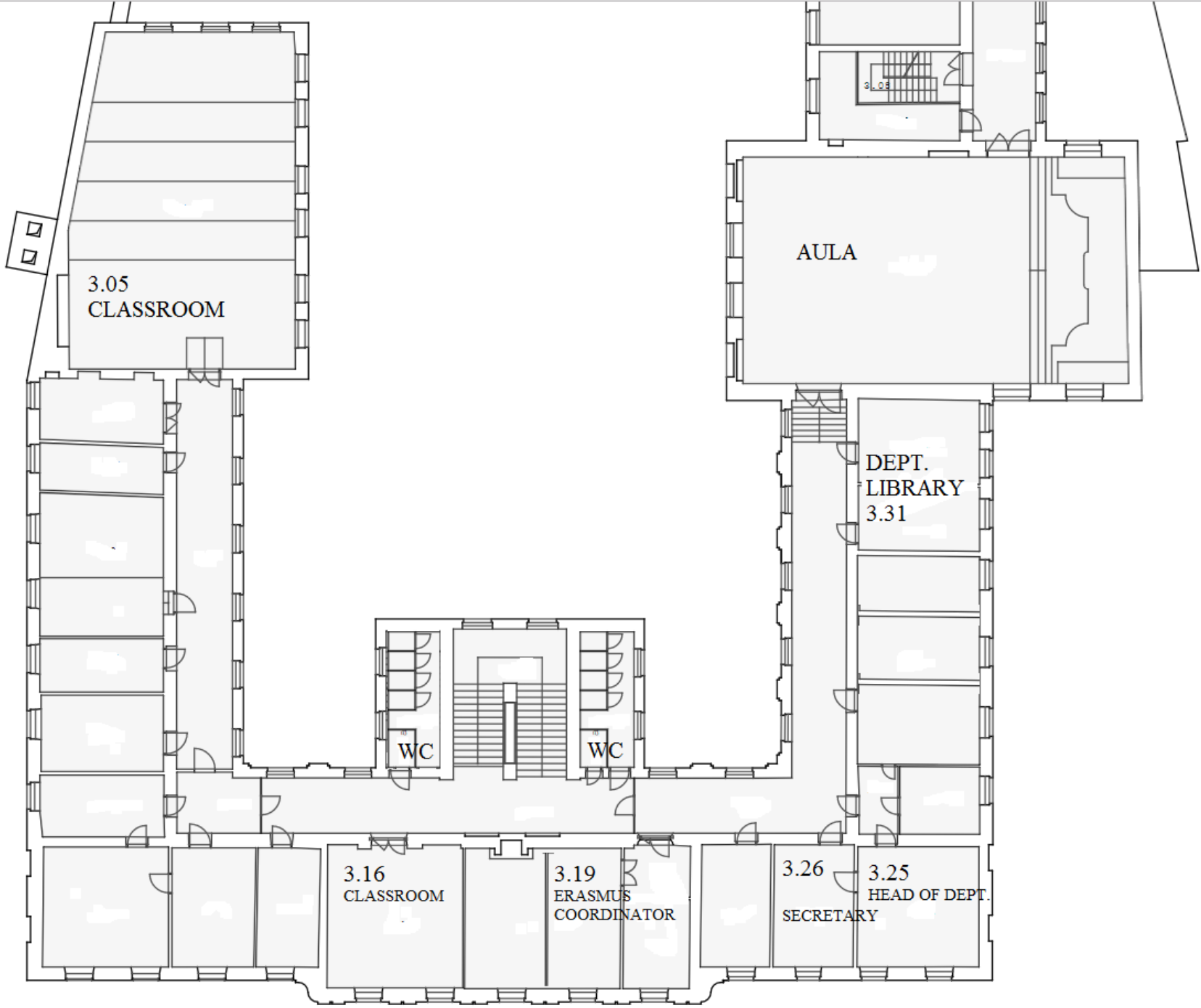
Katedra
Anglistiky a
Amerikanistiky

Information meeting
for incoming international students
2022

www.anglistika.upol.cz

Department of English and American Studies (KAA)
10 Křížkovského Street, Olomouc
(rear building, 3rd floor)





3.05
CLASSROOM

AULA

DEPT.
LIBRARY
3.31

WC

WC

3.16
CLASSROOM

3.19
ERASMUS
COORDINATOR

3.26
SECRETARY

3.25
HEAD OF DEPT.

Classrooms at Křížkovského 10

CLASSROOM NUMBER	LOCATION
P1.31	basement, front building (use the staircase leading down to the basement or the door to the basement close to room 1.44)
1.39	1st floor (=ground floor), front building, computer room
1.40	1st floor (=ground floor), front building, computer room
1.44	1st floor (=ground floor), front building
1.49	1st floor (=ground floor), front building
2.40	2nd floor, front building
3.05	3rd floor, rear building. Dept. of English and American Studies
3.16	3rd floor, rear building. Dept. of English and American Studies

Other classrooms and departments: click [here](#) or see the KAA website for incoming students (Useful links and documents)

Coordinators

- **Palacký University coordinators** (Zuzana Hamdanieh, Klára Henzlová, Eva Ohnisková et al.)
- orientation week, insurance, accommodation
- <https://www.upol.cz/en/students/exchange-students/international-offices/>

- **Faculty of Arts coordinator** (Simona Černá)
- enrolment into courses, Palacky Uni Portal (STAG), transcript of records
- <https://www.ff.upol.cz/en/about/basic-information/>

Coordinators

- **English Department coordinators** (Markéta Janebová for Erasmus and everything else except CEEPUS): approval of study plans, signing of learning agreements, info about English Dept. courses (= courses starting with KAA/)
- marketa.janebova@upol.cz
- office hours: Tuesday 10-11; Thursday 11.30-12.30 or by appointment (Room 3.19)
- **Coordinators from other departments:**
<https://www.upol.cz/en/students/exchange-students/departmental-coordinators/>
- For the location of other departments, click [here](#)

Covid updates

<https://www.upol.cz/en/covid-19/>

1 department

- 30+ teachers
 - students
 - 700 BA and MA
 - 10 Ph.D.
 - 3 international conferences
 - Noam Chomsky 2014
 - many guests from the Czech Rep. and abroad
 - lectures, workshops
 - 3 parties a year (Freshmen Party, Christmas Party, Garden Party)
- 5 Sections:
- Linguistics
 - Literature
 - Culture studies
 - Interpreting & transl.
 - English language

General information

- One-semester courses (but see prerequisites in PU Portal)
- Courses are either lectures (up to 100 students) or seminars (ca 20-25 students)
- 1 teaching hour = 45 minutes; most of the courses take place once a week and consist of 2 teaching hours (=90 minutes).
- Students are obliged to comply with the required attendance policy (usually a maximum of 2–3 absences per semester) and to submit assigned work on time. Assigned work may have the form of oral presentations, reports, written essays, group projects, etc. Students are informed about the form of evaluation and exam requirements during the introductory class for each course.

Assessment and Credits

- The number of credits corresponds to the number of ECTS credits (European Credit Transfer System).
- Usually 3-4 credits per course
- Some courses can be completed with a *zápočet* (pre-exam credit =PC= Pass/Fail) only, some with a PC plus an end-of-course exam.
- The majority of exams have their own codes and are taken separately after the prerequisite course has been completed. Exams are more demanding than PCs and can be written, or oral, or both. A comprehensive exam covers topics from more than one course. Exams are assessed by grades A to F. Each exam can be retaken twice.
- 1 credit for a regular exam; 2 credits for a comprehensive exam

Grades

- If you need a grade but there is only a *PC* (pre-exam credit) for the course (=Pass/Fail), there are two things you can do:
- take the separate exam (if there is one for the course: check the UP Portal or see below) for an extra credit (but note that the 2-credit exams are comprehensive, i.e. cover the content of two or more courses)

OR

- the teacher will put the percentage score in the "Points" section in Stag after you have completed the course (50=E, 60 =D, 70=C, 80=B, 90 and up=A; F- fail, less than 49); the score will then be exported as a grade to your Transcript of Records by the faculty coordinator at the end of your stay

Which courses can you take?

- Incoming exchange students can choose any course from the timetable, both obligatory and optional courses
- BUT: all courses require at least a B2 level of English (CEFR)
- MA courses are not intended for BA students (see our WEB for an overview)
- Some courses may have prerequisites (check PU Portal or ask the teacher) and/or require some previous knowledge and/or require knowledge of Czech
- your timetable shows courses taught in English (colour-coded)
- Don't miss the first lesson!
- If you arrive late due to visa problems etc., contact the department coordinator ASAP.

How to enrol?

- If the course is available, sign up for it electronically via PU Portal
- At the English dept., it is often the case that the courses are **full**: you need to **attend the first lesson** and check with the teacher if they can take you
- If they do (and they usually do if the capacity of the classroom allows it), make an appointment with the English dept. coordinator. **This cannot be done via email, you need to come personally by the end of the first week**
- If there are prerequisites which do not allow you to enrol, the faculty coordinator will have to add you to the system manually: **CAA/AJC₃, AJC₄, AJC₅**. **Get in touch with Mrs Simona Černá (make sure to give her the details, i.e. day and time of the class)**

Changes in the LA

- During the first week of the semester, students attend the classes they are interested in and finalise their LAs.
- The finalized list of English dept. courses must be **consulted** with the coordinator at the Department of English and American Studies
- By the end of the first week, you must **enrol** in PU STAG in all courses you will be actually attending; or, if it's not possible, send an email to Mrs Simona Černá by the end of the second week (giving the details, i.e. code, day, time)
- It is important to **unenrol** (i.e. to NOT have in the PU Portal) from the courses are not taking – otherwise you will get an F at the end of the semester. This can be done in the PU Portal during the first week of the semester
- have the respective coordinators sign the During the mobility section in due time (usually within 1 month)

Timetable (example)

1.39=1st floor, 2.40=2nd floor, etc.

The same code+same name = parallel course; choose one only (with the exception of some courses ending in 00)

Day	Room	8:00-9:30	9:45-11:15	11:30-13:00
MONDAY	1.39 25p	AFO2 Phonetic seminar Šimáčková	AFO2 Phonetic seminar Šimáčková	TRM2 Zehnalová
	2.40 48st	BS3G British Studies: Cult. geography- Flajšarová	BS2M British Studies: society Flajšarová	AML2 American lit. until 1880 Peprník M.
	1.49 35st	BRL1 British lit. 1800-1900 Jelínková	AML1 American literature Sweney	IS01 Irish Studies 1 Sweney
	1.44 21st		AJC4 English Language 4 Tylšarová	AJC5 English Language 5 Tylšarová
	3.05 102st	UJ00 (lecture) Introd. to linguistics Podlipský	AFO1 - FO01 Phonetics Podlipský	UL00 (lecture) Intro into Literature Arbeit

UJ00 + UL00: lecture + seminar must be taken in one semester

AFO2
Phonetic seminar
Šimáčková

AS1H
American Studies: History
Sweney

Linguistics

Culture studies

BRL1
British lit. 1800-1900
Livingstone

AJC5 English Language 5
Tylšarová

Literature

Practical English

UP Portal (STAG)

The screenshot shows the UP Portal (STAG) interface. At the top, there is a logo for Palacký University Information System and a 'Log In' button. Below the logo is a navigation bar with links: Home, Studying & Teaching, Administration, Contacts, and E-mail. A secondary navigation bar includes Browsing, Courseware, Quality Of Education, and Applicant. The main content area is titled 'View data' and contains a 'Course' search form. The search form includes a sidebar with categories: Study programmes and fields, Courses, Departments, Lecturers, Students, Examination dates, and Timetable events. The 'Course' search form has the following fields: Department abbreviation (KAA), Course abbreviation (%), Name (%), Year (2012/2013), and Taught in language (%). A 'Search' button is located to the right of the form.

(Unit) Department abbreviation: KAA

Course abbreviation: see the timetable (what's not in the timetable is **not taught** this semester except for **exams**)

Year: current year

UP Portal (STAG)

Course

Search for a course based on given parameters.

Unit abbreviation: Course abbreviation: Title:

Instruction language: Form of course completion: Accreditation:

[Course description](#)
[Study programmes](#)
[List of students](#)
[Timetable](#)
[Examination dates](#)
[Timetable events](#)
[Permissions](#)

Department/Unit / Abbreviation	KAA / BRL1			Academic Year	2015/2016
Title	British Literature 1800-1900			Form of course completion	Pre-Exam Credit
Accredited / Credits	Yes, 4 Cred.			Type of completion	Combined
Time requirements	Seminar 2 [Hours/Week]			Course credit prior to examination	NO
Occ/max	Statut A	Statut B	Statut C	Included in study average	NO
Summer semester	0 / -	0 / -	0 / -	Language of instruction	English
Winter semester	11 / -	33 / -	0 / -	Repeated registration	NO
Timetable	Yes			Semester taught	Winter + Summer
Minimum (B + C) students	not determined			Volně zapisovatelný předmět	Yes
Substituted course	None				
Preclusive courses	N/A				
Prerequisite courses	N/A				
Informally recommended courses	N/A				
Courses depending on this Course	KAA/BL1Z				
Histogram of students' grades over the years: Obrázek PNG , XLS					
Course objectives:					
The course in British Literature 1 focuses on the development of English literature in the 18th and 19th centuries. During the seminar study as well as works by authors of the Victorian period. The course introduces poetry, fiction and drama. Attention is also paid to the literary a					

More information anglistika.upol.cz

https://anglistika.upol.cz

UPOL Gmail KAA Moodle KAA MOODLE UPOL Katedry FF UP (TYPO (BYU-BNC) OneLook CMS De Gruyter Online Jo Cambridge Web of Science [v.5. Moodle Jarko Bookma

Filozofická fakulta

Uchazeči o studium

Stávajícím studentům

Kontakty



EN



Katedra anglistiky
a amerikanistiky

Aktuality

O katedře

Stávajícím
studentům

Lidé

Věda
a výzkum

Zahraníční
vztahy

Foreign
students



Studuj anglickou
filologii, tlumočení
a překlad!



Informace pro
uchazeče



Žurnál Online
zpravodajství z UP



Studujte na FF UP



Moodle

Pro uchazeče

Na katedře anglistiky můžete studovat **anglickou filologii** (studuj.anglistiku.upol.cz) nebo **tlumočnictví a překladatelství** (studuj.atp.upol.cz).

Podrobné informace o [studijních oborech](#) a o [přijímacích zkouškách](#).

Information in ENGLISH for foreign prospective students is available [here](#).

14
únor

Studentská
politologická
konference

14. 2.
09:00–16:15

4 5

Philosophia

Moodle (learning platform)

www.moodle.upol.cz

- we use Moodle to share teaching materials with the students.
- login the same as in the PU Portal;
- once you are enrolled in Stag for a course, the course automatically appears in your Moodle home page as well
- Problem: you are not in Stag yet, but there is already assignment in Moodle.

Solution 1: try to enrol as soon as possible

Solution 2 (temporary): Teachers can add you manually as Student-Asynchron, but you have to log in Moodle first so that Moodle knows you.

moodle.upol.cz

- moodle.upol.cz

Jednotné přihlášení
Univerzita Palackého v Olomouci

Přihlášení ke službě Aplikace pro
e-learning

Uživatelské jméno



PORTAL NAME

Heslo



PORTAL PASSWORD



Přihlásit

LOGIN

How to change the language setting in Moodle to English



Univerzita Palackého
v Olomouci

🏠 / Můj přehled semestrů

Důležité informace pro uživatele MOODLE UPOL

LANGUAGE SETTING



[NASTAVENÍ JAZYKA / SETTING LANGUAGE PREFERENCES >>](#)

RADY A NÁPOVĚDY

Užitečné odkazy, návody a dokumentaci k MOODLE UPOL naleznete na adrese:
<https://cvt.upol.cz/moodle/>.

VYHLEDÁVÁNÍ A PŘEHLED KURZŮ

Pokud jste správci kateder, uživatelé se zvýšenými právy nebo jen zájemci o nabídku všech kurzů dostupných v prostředí Moodle UPOL - můžete na ně nahlédnout zde:

[VŠECHNY KURZY na Moodle UPOL >>](#)

Letní semestr 2021/2022 (8)

Zimní semestr 2021/2022 (9)

Zobrazit včetně událostí

- [2021-ZSiLS-KAA/BIS1---711728 - Diploma Seminar 1: Linguistics&Translation&Int](#)
- [2021-ZS-KAA/BIS1--ZS-- Diploma Seminar 1: Literature&Culture Studies](#)
- [2021-ZSiLS-KAA/UPRG---- Introduction to Pragmatics](#)
- [2021-ZSiLS-KAA/GRTZK---- Kontrastivní gramatika pro překlad](#)
- [2021-ZSiLS-KAA/GRT2---- Kontrastivní gramatika pro překlad 2](#)
- [2021-ZSiLS-KAA/GRT3---- Kontrastivní gramatika pro překlad 3](#)
- [2021-ZSiLS-KAA/PRAG---- Pragmatics](#)

Moodle: English dept. forum

- Once you have signed up, join the English department discussion forum with announcements (relevant information will be in English)

- [DF KAA](#)

You need to self-enrol in DF KAA (see next slide)



Důležité informace pro uživatele MOODLE UPOL

LANGUAGE SETTING



[NASTAVENÍ JAZYKA / SETTING LANGUAGE PREFERENCES >>](#)

RADY A NÁPOVĚDY

Užitečné odkazy, návody a dokumentaci k MOODLE UPOL naleznete na adrese:
<https://cvr.upol.cz/moodle/>.

VYHLEDÁVÁNÍ A PŘEHLED KURZŮ

Pokud jste správci kateder, uživatelé se zvláštními právy nebo jen zájemci o nabídku všech kurzů dostupných v prostředí Moodle UPOL - můžete na ně nahlédnout zde:

[VŠECHNY KURZY na Moodle UPOL >>](#)

PRAVIDELNÉ ZÁLOHOVÁNÍ

Pravidelné každodenní zálohování prostředí Moodle probíhá v

Summer semester 2021/2022 (8)

Winter semester 2021/2022 (9)

View including events



2021-ZSiLS-KAA/BIS1---711728 - Diploma Seminar 1: Linguistics&Translation&Interpreting



2021-ZS-KAA/BIS1--ZS- - Diploma Seminar 1: Literature&Culture Studies



2021-ZSiLS-KAA/UPRG---- Introduction to Pragmatics



2021-ZSiLS-KAA/GRTZK---- Kontrastivní gramatika pro překlad



2021-ZSiLS-KAA/GRT2---- Kontrastivní gramatika pro překlad 2



2021-ZSiLS-KAA/GRT3---- Kontrastivní gramatika pro překlad 3



2021-ZSiLS-KAA/PRAG---- Pragmatics



2021-ZSiLS-KAA/ANT1---- Text Analysis 1

“Vyhledávání” = search. Click on the hyperlink to be able to search for courses and type in DF KAA.

Show all

Důležité informace pro uživatele MOODLE UPOL

LANGUAGE SETTING



[NASTAVENÍ JAZYKA / SETTING LANGUAGE PREFERENCES >>](#)

RADY A NÁPOVĚDY

Užitečné odkazy, návody a dokumentaci k MOODLE UPOL naleznete na adrese:
<https://cvt.upol.cz/moodle/>.

VYHLEDÁVÁNÍ A PŘEHLED KURZŮ

Pokud jste správci kateder, uživatelé se zvýšenými právy nebo jen zájemci o nabídku všech kurzů dostupných v prostředí Moodle UPOL - můžete na ně nahlédnout zde:

[VŠECHNY KURZY na Moodle UPOL >>](#)

PRAVIDELNÉ ZÁLOHOVÁNÍ

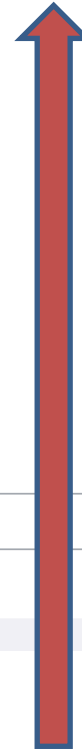
Search results: 1

[DF KAA DISCUSSION FORUM KAA](#)

- Teacher: [Markéta JANEBOVÁ](#)
- Teacher: [Ondřej KLABAL](#)
- Teacher: [Pavel KRÁL](#)
- Teacher: [Michal KUBÁNEK](#)
- Teacher: [David LIVINGSTONE](#)
- Teacher: [Michaela MARTINKOVÁ](#)
- Teacher: [SABINA PAZDEROVÁ](#)
- Teacher: [Václav Jonáš PODLIPSKÝ](#)
- Teacher: [Šárka ŠIMÁČKOVÁ](#)
- Teacher: [Matthew SWENEY](#)
- Teacher: [Kamila VEČEŘOVÁ](#)
- Teacher: [Ludmila VESELOVSKÁ](#)
- Teacher: [Josefína ZUBÁKOVÁ](#)

Search courses

[Go](#)



Click on the hyperlink and then, on the next screen, on “self-enrol”

Courses usually available every semester

Obligatory courses (see below) are usually taught every semester, while the choice of the optional ones may vary.

Check with the timetable:

what's not in the timetable is **not taught** this semester

with the exception of **exams**

Literature: Obligatory (survey) courses

Course Code	Course Title	Credits	Teaching hours: lecture+ seminar	Assessment	Recommended esp. for:
KAA/UL00	Introduction to the Study of Literature	4	1+1*	PC, EX	BA
KAA/BRL1	British Literature 1 (1800-1900)	4	0+2	PC	BA
KAA/BRL2	British Literature 2 (1900-1950)	4	0+2	PC	BA
KAA/BRL3	British Literature 3 (until 1800)	4	0+2	PC	MA
KAA/BRL4	Contemporary British Literature	4	0+2	PC	MA
KAA/AML1	American Literature 1 (until 1880)	4	0+2	PC	BA
KAA/AML2	American Literature 2 (1880-1945)	4	0+2	PC	BA
KAA/AML4	Contemporary American Literature (after 1945)	4	0+2	PC	MA

*with this course it is necessary to take the lecture and seminar simultaneously in one semester

Literature: optional courses

(the choice may vary)

Course Code	Course Title	Credits	Extent: lecture+ seminar	Assess- ment	Recom- mended esp. for:
KAA/APOS	American Postmodernism	4	0+2	c	MA
KAA/BS00	Shakespeare- tragedies	4	0+2	c	BA/MA
KAA/BS00	British Satire	4	0+2	c	BA/MA
KAA/BS00	Children's Literature	4	0+2	c	BA/MA
KAA/FANT	Literature of the Fantastic	4	0+2	c	BA/MA
KAA/IRL1	Irish Literature	4	0+2	c	BA/MA
KAA/KAL2	Chapters from Am. Lit: American Short Story	4	0+2	c	BA/MA
KAA/LITK	Theory of Lit. Interpretation	4	0+2	c	MA
KAA/LK03	Literature Colloquium	4	0+2	c	BA/MA
KAA/SLAM	Slam Poetry	4	0+2	c	BA/MA
KAA/SOUT	Southern Literature	4	0+2	c	BA/MA

KAA/ERAS Introduction to Czech Culture for Foreign Students

This course is designed for visiting foreign students who would like to learn more about the culture of the Czech Republic.

There will also be mandatory field trips to museums, exhibitions and places of interest.

In order to receive credit for the course students will have to participate in class, attend regularly (80%) and write a diary of their experience during their stay.

Students should have at least a medium B2 level of English.

The course is will be taught by Dr. David Livingstone.

Registration in the class will be dealt with the first day.

Literature: Exams

Code	Course Title	Credits	Assessment	Prerequisite Courses
KAA/BL1Z	Brit. Literature until 1950: Comprehensive Exam	2	EX	BRL1 or BRL2 and UL00
KAA/BL2Z	British Literature: Exam	1	EX	BRL3 or BRL4
KAA/BL3Z	British Literature: Exam	1	EX	BRL3 or BRL4
KAA/AL1Z	American Literature until 1945: Comprehensive Exam	2	EX	AML1 or AML2 and UL00
KAA/AL2Z	American Literature: Exam	1	EX	AML3 or AML4
KAA/AL3Z	American Literature: Exam	1	EX	AML3 or AML4
KAA/TELZ	Literary Criticism	1	EX	LITK

(THESE ARE NOT TAUGHT COURSES, BUT EXAMS WHICH MAY BE TAKEN AFTER THE COMPLETION OF THE PREREQUISITE COURSES)

Culture studies

Course Code	Course Title	Credits	Extent: lecture+ seminar	Assess- ment	Recom- mended esp. for:
KAA/BS1H	British Studies 1: History	4	2+0	c	BA/MA
KAA/BS2M	British Studies 2: Modern Br. Society	4	2+0	c	BA/MA
KAA/BS3G	British Studies 3: Cultural Geography	4	2+0	c	BA/MA
KAA/AS1H	American Studies 1: Am. History	4	0+2	c	BA/MA
KAA/AS2M	American Studies 2: Modern Am. Society	4	0+2	c	BA/MA
KAA/AS3G	American Studies 3: Cultural Geography	4	0+2	c	BA/MA
KAA/AS00	Chapters from American Culture	4	0+2	c	BA/MA
KAA/AS00	American Folk Music	4	0+2	c	BA/MA
KAA/SK01	Scottish Studies 1	4	0+2	c	BA/MA
KAA/SK02	Scottish Studies 2	4	0+2	c	BA/MA
KAA/IS01	Irish Studies 1	4	0+2	c	BA/MA
KAA/IS02	Irish Studies 2	4	0+2	c	BA/MA

Culture studies: Exams

Code	Course Title	Credits	Assessment	Prerequisite Courses
KAA/KSZ1	Cultural Studies 1: Exam	2	EX	AS1H or AS2M or AS3G or BS1H or BS2M or BS3G
KAA/KSZ2	Cultural Studies 2: Exam	1	EX	CS01 or CS02 or IS01 or IS02 or SK01 or SK02

(THESE ARE NOT TAUGHT COURSES, BUT EXAMS WHICH MAY BE TAKEN AFTER THE COMPLETION OF THE PREREQUISITE COURSES):

Linguistics: Obligatory (survey) courses

Course Code	Course Title	Credits	Extent: lecture+ seminar	Assess- ment	Recom- mended esp. for:
KAA/UJ00	Introduction into Linguistics	4	1+1*	c, EX	BA
KAA/APGR	Practical English Grammar	3	0+2	c	BA
KAA/AFO1	Phonetics (lecture)	4	2+0	c	BA
KAA/AFO2	Phonetic Seminar	4	0+2	c	BA
KAA/FOAN	English Phonetics	4	0+2	c	BA
KAA/AMOR	Morphology	4	2+0	c	BA
KAA/AMOS	Morphosyntax	4	0+2	c	BA
KAA/SNT1	Syntax 1	4	0+2	c	BA
KAA/LEX1	Lexicology and Lexicography	4	0+2	c	BA
KAA/STL1	Introduction to Stylistics	4	0+2	c	BA
KAA/SNT2	Syntax 2	4	0+2	c	MA
KAA/FUNS	Functional Styles in English	4	0+2	c	MA
KAA/VYTX	Text Analysis	4	0+2	c	MA
KAA/HANG	Historical Development of English Advanced MA course	4	2+0	c	MA

*with this course it is necessary to take the lecture and seminar simultaneously in one semester

Linguistics: Options

(the choice may vary)

Course Code	Course Title	Credits	Extent: lecture+ seminar	Assess- ment	Recom- mended esp. for:
KAA/AF10	Varieties of English Pronunciation	4	0+2	c	MA
KAA/AFO4	Topics in Phonetics	4	0+2	c	BA/MA
KAA/KOR1	Corpus Linguistics	4	0+2	c	BA/MA
KAA/LUTY	Language Universals and Typology	4	0+2	c	MA
KAA/PRAG	Introduction into Pragmatics	4	0+2	c	MA
KAA/SEM1	Lexical Semantics	4	0+2	c	MA

Linguistics: Exams

Code	Course Title	Credits	Assessment	Prerequisite Courses
KAA/LESZ	Lexicology and Stylistics	2	EX	LEX1 or STL1
KAA/AFO3	Phonetics: Exam	2	EX	AFO1 or AFO2 and UJ00
LIA1	Linguistic analysis 1	1	EX	HANG or SNT2 or AF10
LIA2	Linguistic analysis 2	1	EX	HANG or SNT2 or AF10
KAA/GRFZ	Grammar for Philologists: Exam	2	EX	AMOR & AMOS & SNT1
KAA/ANT1	Text Analysis 1: Exam	1	EX	FUNS or VYTX or SEM1
KAA/ANT2	Text Analysis 2: Exam	1	EX	FUNS or VYTX or SEM1

(THESE ARE NOT TAUGHT COURSES, BUT EXAMS WHICH MAY BE TAKEN AFTER THE COMPLETION OF THE PREREQUISITE COURSES)

Practical English: Courses

Course Code	Course Title	Credits	Extent: lecture+ seminar	Assess- ment	Recom- mended esp. for:
KAA/AJC1	English Language 1	3	0+2	PC	BA
KAA/AJC2	English Language 2	3	0+2	PC	BA
KAA/AJC3	English Language 3	3	0+2	PC	BA
KAA/AJC4	English Language 4	3	0+2	PC	BA
KAA/AJC5	English Language 5	3	0+2	PC	BA
KAA/AJC6	English Language 6	3	0+2	PC	MA
KAA/AJC7	English Language 7	3	0+2	PC	MA
KAA/AJC8	English Language 8	3	0+2	PC	MA

AJC1: Academic writing

AJC2: Presentations

AJC3-8: *CAE result; Proficiency Masterclass*

You can take any of those course in any order (i.e. you can only take e.g. AJC3 without taking AJC1 and AJC2)

Contact Helena Tylšarová at helena.tylsarova@upol.cz if you have any questions regarding these courses

Practical English: Exams

Code	Course Title	Credits	Assessment	Prerequisite Courses
KAA/JZB2	Comprehensive Practical English Exam B2	2	EX	AJC1 or AJC2
KAA/JZC1	Comprehensive Practical English Exam C1	2	EX	AJC3 or AJC4 or AJC5
KAA/JZC2	Comprehensive Practical English Exam C2	2	EX	AJC6 or AJC7

(THESE ARE NOT TAUGHT COURSES, BUT EXAMS WHICH MAY BE TAKEN AFTER THE COMPLETION OF THE PREREQUISITE COURSES)

Contact Helena Tylšarová at helena.tylsarova@upol.cz if you have any questions regarding these exams

Practical English: Prerequisites

Technical glitch:

KAA/AJC3, AJC4, AJC5 have prerequisites in Stag which will not allow you to enrol. If you have one of these courses in your LA, get in touch with Mrs Simona Černá during the second week of the semester. The faculty coordinator will have to enroll you manually (make sure to give all the details, i.e. code, day, time)

So what to do next? (1)

1. in the timetable, check what is actually taught this semester and compare it with the Before mobility section of your LA
2. make a list of courses you would like to attend
3. consult your choice of courses taught at the English department with the department coordinator (Markéta Janebová) and then
4. sign up in the PU Portal, or, if the course is full or there is a problem with the registration, wait for the first lesson
5. go to the first lesson to learn more about the course (**do not miss the first lesson** even if you have signed up in STAG) and talk to the teacher to find out whether the course is suitable for you

So what to do next? (2)

6. if the teacher says you can attend the course and the capacity is still full, either

a) get in touch with the English dept. coordinator. You need to come personally upon previous arrangement in the first week of the semester (only English dept. courses can be sorted out in the way);

or

b) wait for the second week of the semester and send an email to Mrs Simona Černá, the faculty coordinator, with a list of the courses you need to be enrolled in (all Faculty of Arts courses and the details, i.e. code, day, time)

7. After finalizing the list of courses, make changes in the Learning agreement form and have it signed by both parties in due time

8. Enjoy your stay 😊

Thank you
and enjoy your stay in Olomouc!

