



Katedra  
Anglistiky a  
Amerikanistiky

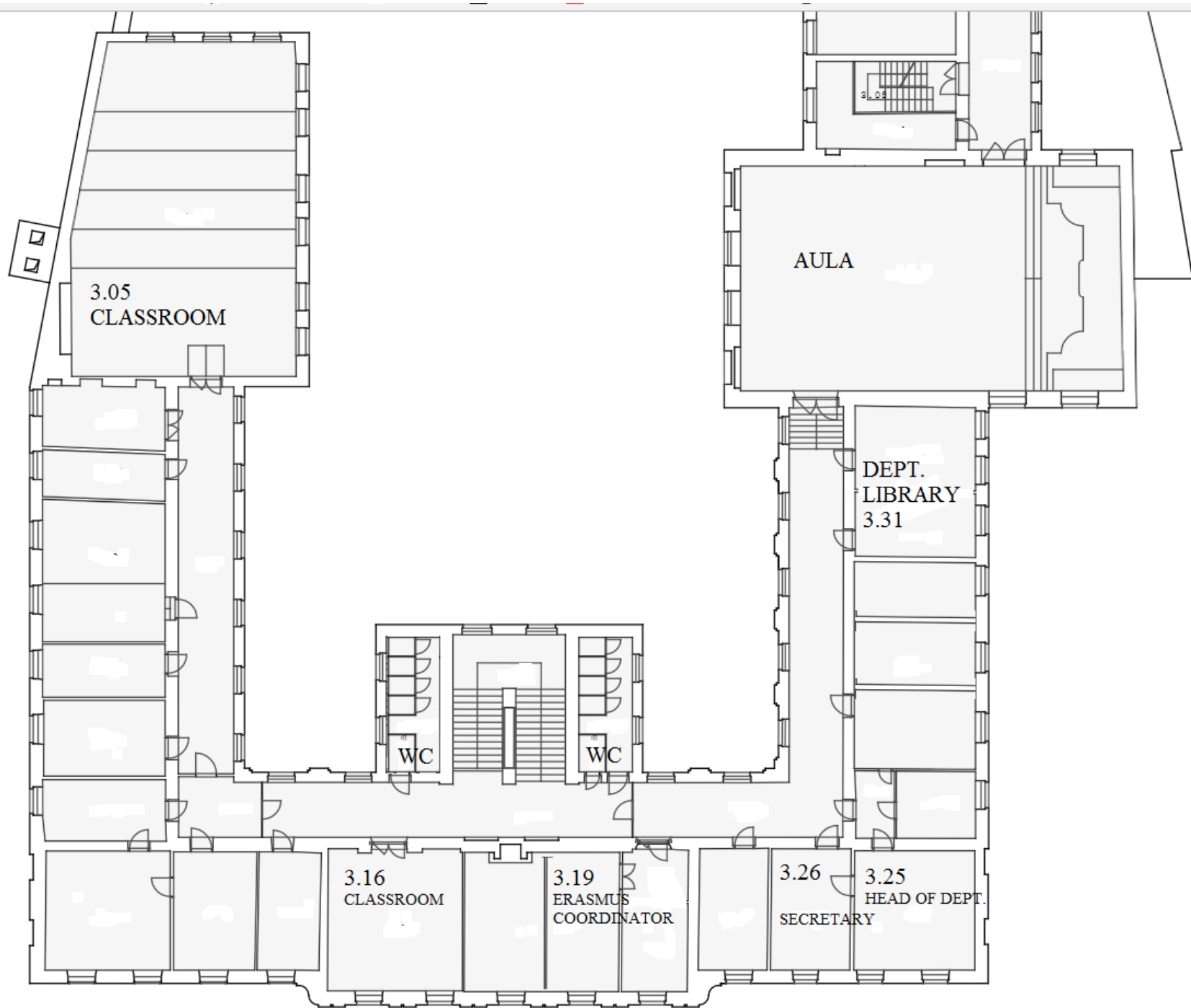
Information meeting  
for incoming foreign students  
2020

[www.anglistika.upol.cz](http://www.anglistika.upol.cz)

# Department of English and American Studies (KAA)

10 Křížkovského Street, Olomouc  
(rear building, 3rd floor)





# Classrooms at Křížkovského 10

CLASSROOM NUMBER	LOCATION
<b>P1.31</b>	basement, front building (entrance on the left, close to room 1.44)
<b>1.39</b>	1st floor (=ground floor), front building, computer room
<b>1.40</b>	1st floor (=ground floor), front building, computer room
<b>1.44</b>	1st floor (=ground floor), front building
<b>1.49</b>	1st floor (=ground floor), front building
<b>2.40</b>	2nd floor, front building
<b>3.05</b>	3rd floor, rear building. Dept. of English and American Studies
<b>3.16</b>	3rd floor, rear building. Dept. of English and American Studies

Other classrooms and departments: click [here](#) or see the KAA website for incoming students (Useful links and documents)

# Coordinators

- **Palacký University coordinators** (Zuzana Hamdanieh, Klára Henzlová, Eva Ohnisková): orientation week, insurance, accommodation
- <https://www.upol.cz/en/students/exchange-students/international-offices/>
- **Faculty of Arts coordinator** (Simona Černá): enrolment into courses, Palacky Uni Portal (STAG), transcript of records
- <https://www.ff.upol.cz/en/about/basic-information/>

# Coordinators

- **English Department coordinators** (Markéta Janebová for Erasmus and everything else except CEEPUS): approval of study plans, signing of learning agreements, info about English Dept. courses (= courses starting with KAA/)
- marketa.janebova@upol.cz
- office hours: Tuesday 10-11; Thursday 14-15 or by appointment (Room 3.19)
- **Coordinators from other departments:**  
<https://www.upol.cz/en/students/exchange-students/departamental-coordinators/>
- For the location of other departments, click [here](#)

# 1 department

- 30+ teachers
- students
  - 700 BA and MA
  - 15 Ph.D.
- 5 Sections:
  - Linguistics
  - Literature
  - Culture studies
  - Interpreting & transl.
  - English language
- 3 international conferences
  - Noam Chomsky 2014
  - OLINCO 2018
- many guests from the Czech Rep. and abroad
  - lectures, workshops
- 3 parties a year (Freshmen Party, Christmas Party, Garden Party)

# General information

- One-semester courses (but see prerequisites in PU Portal)
- Most courses are seminars (ca 20-25 students)
- 1 teaching hour = 45 minutes; most of the courses take place once a week and consist of 2 teaching hours (=90 minutes).
- Students are obliged to comply with the required attendance policy (usually a maximum of 2–3 absences per semester) and to submit assigned work on time. Assigned work may have the form of oral presentations, reports, written essays, group projects, etc. Students are informed about the form of evaluation and exam requirements during the introductory class for each course.



# Assessment and Credits

- The number of credits corresponds to the number of ECTS credits (European Credit Transfer System).
- Usually 3-4 credits per course
- Some courses can be completed with a *zápočet* (pre-exam credit =PC= Pass/Fail) only, some with a PC plus an end-of-course exam.
- The majority of exams have their own codes and are taken separately after the prerequisite course has been completed. Exams are more demanding than PCs and can be written, or oral, or both. A comprehensive exam covers topics from more than one course. Exams are assessed by grades A to F. Each exam can be retaken twice.
- 1 credit for a regular exam; 2 credits for a comprehensive exam

# Grades

- If you need a grade but there is only a *PC* (pre-exam credit) for the course (=Pass/Fail), there are two things you can do:
- 1. take the separate exam (if there is one for the course: check the UP Portal or see below) for an extra credit (but note that the 2-credit exams are comprehensive, i.e. cover the content of two or more courses)

OR

- 2. ask the teacher to put the percentage score in the “Points” section in Stag after you have completed the course (50=E, 60 =D, 70=C, 80=B, 90 and up=A; F- fail, less than 49); the score will then be exported as a grade to your Transcript of Records by the faculty coordinator at the end of your stay

# Which courses can you take?

- Incoming exchange students can choose any course from the timetable, both obligatory and optional courses from the Bachelor's and Master's programmes
- BUT: all courses require at least a B2 level of English (CEFR)
- Some courses may have prerequisites (check PU Portal or ask the teacher) and/or require some previous knowledge and/or require knowledge of Czech
- your timetable shows courses taught in English (colour-coded)
- Don't miss the first lesson!
- If you arrive late due to visa problems etc., contact the department coordinator ASAP.

# Which courses can you take?

- If the course is available, sign up for it electronically via PU Portal
- At the English dept., it is often the case that the courses are full: you need to attend the first lesson and ask the teacher if they can take you
- If they do (and they usually do if the capacity of the classroom allows it), wait for the capacity to be increased at the beginning of the second week
- If there are prerequisites which do not allow you to enrol, the faculty coordinator will have to add you to the system manually: KAA/AJC<sub>3</sub>, AJC<sub>4</sub>, AJC<sub>5</sub>

# Changes in the LA

- During the first week of the semester, students attend the classes they are interested in and finalise their LAs as soon as possible.
- The list of courses must be consulted with the coordinator at the Department of English and American Studies, who will sign the Changes section of the LA
- It is important to unenrol (i.e. to NOT have in the PU Portal) from the courses are not taking – otherwise you will get an F at the end of the semester. This can be done in the PU Portal during the first three weeks of the semester
- Updated LA must be uploaded in the Erasmusplus app (i.e. where you uploaded the application form and LA before the mobility) – see the current deadline (usually within three weeks)

# Timetable (example)

1.39=1st floor, 2.40=2nd floor, etc.

The same code+same name = parallel course; choose one only (with the exception of some courses ending in 00)

↓

Day	Room	8:00-9:30	9:45-11:15	11:30-13:00
MONDAY	1.39 25p	AFO2 Phonetic seminar Šimáčková	AFO2 Phonetic seminar Šimáčková	TRM2 Zehnalová
	2.40 48st	BS3G British Studies: Cult. geography- Flajšarová	BS2M British Studies: society Flajšarová	AML2 American lit. until 1880 Peprník M.
	1.49 35st	BRL1 British lit. 1800-1900 Jelínková	AML1 American literature Sweney	IS01 Irish Studies 1 Sweney
	1.44 21st		AJC4 English Language 4 Tylšarová	AJC5 English Language 5 Tylšarová
	3.05 102st	UJ00 (lecture) Intro. to linguistics Podlipský	AFO1 - FO01 Phonetics Podlipský	UL00 (lecture) Intro into Literature Arbeit

UJ00 + UL00: lecture + seminar must be taken in one semester

AFO2  
Phonetic seminar  
Šimáčková

BRL1  
British lit. 1800-1900  
Livingstone

AS1H  
American Studies: History  
Sweney

AJC5 English Language 5  
Tylšarová

Linguistics

Literature

Culture studies

Practical English

# UP Portal (STAG)



The screenshot displays the UP Portal (STAG) interface. At the top, there is a header with the Palacký University Information System logo and navigation links: Home, Studying & Teaching, Administration, Contacts, and E-mail. Below this is a secondary navigation bar with links: Browsing, Courseware, Quality Of Education, and Applicant. The main content area is titled 'View data' and contains a sidebar with a tree view of categories: Study programmes and fields, Courses, Departments, Lecturers, Students, Examination dates, and Timetable events. The 'Courses' category is selected, and the 'Course' search form is displayed. The form includes a search bar and several input fields: Department abbreviation (KAA), Course abbreviation (%), Name (%), and Year (2012/2013). A 'Search' button is located at the bottom right of the form.

Portal  
Palacký University Information System

Home | Studying & Teaching | Administration | Contacts | E-mail |

Browsing | Courseware | Quality Of Education | Applicant

Studying & Teaching / Browsing

View data

Study programmes and fields

- Courses
- Departments
- Lecturers
- Students
- Examination dates
- Timetable events

Course

Search for course according to the set parameters.

Department abbreviation KAA Course abbreviation % Name % Year 2012/2013

Taught in language %

Search

(Unit) Department abbreviation: KAA

Course abbreviation: see the timetable (what's not in the timetable is **not taught** this semester)

Year: current year

# UP Portal (STAG)

## Course

Search for a course based on given parameters.

Unit abbreviation	KAA	Course abbreviation	BRL1	Title	%
Instruction language	%	Form of course completion	%	Accreditation	%

Abbreviation	Title	Variant
KAA / BRL1	<a href="#">British Literature 1800-1900</a>	2015/2016

[Course description](#)
[Study programmes](#)
[List of students](#)
[Timetable](#)
[Examination dates](#)
[Timetable events](#)
[Permissions](#)

Department/Unit / Abbreviation	KAA / BRL1	Academic Year	2015/2016
Title	British Literature 1800-1900	Form of course completion	Pre-Exam Credit
Accredited / Credits	Yes, 4 Cred.	Type of completion	Combined
Time requirements	Seminar 2 [Hours/Week]	Course credit prior to examination	NO
Occ/max	<a href="#">Statut A</a> <a href="#">Statut B</a> <a href="#">Statut C</a>	Included in study average	NO
Summer semester	0 / -    0 / -    0 / -	Language of instruction	English
Winter semester	11 / -    33 / -    0 / -	Repeated registration	NO
Timetable	Yes	Semester taught	Winter + Summer
Minimum (B + C) students	not determined	Volně zapisovatelný předmět	Yes
Substituted course	None		
Preclusive courses	N/A		
Prerequisite courses	N/A		
Informally recommended courses	N/A		
Courses depending on this Course	<a href="#">KAA/BL1Z</a>		
Histogram of students' grades over the years: <a href="#">Obrázek PNG</a> , <a href="#">XLS</a>			

Course objectives:

The course in British Literature 1 focuses on the development of English literature in the 18th and 19th centuries. During the seminar study as well as works by authors of the Victorian period. The course introduces poetry, fiction and drama. Attention is also paid to the literary a




# More information anglistika.upol.cz


https://anglistika.upol.cz

UPOL Gmail KAA Moodle KAA MOODLE UPOL Katedry FF UP [TYPO] (BYU-BNC) OneLook CMS De Gruyter Online Jo Cambridge Web of Science [v.5.1] Moodle Jarko Bookma


Filozofická fakulta Uchazeči o studium Stávajícím studentům Kontakty Q EN

 Katedra anglistiky a amerikanistiky


Aktuality O katedře Stávajícím studentům Lidé Věda a výzkum Zahraniční vztahy Foreign students





Studuj anglickou filologii, tlumočení a překlad!



Informace pro uchazeče

 Žurnál Online zpravodajství z UP

 Studujte na FF UP

 Moodle

**Pro uchazeče**

Na katedře anglistiky můžete studovat **anglickou filologii** ([studuj.anglistiku.upol.cz](http://studuj.anglistiku.upol.cz)) nebo **tlumočnictví a překladatelství** ([studuj.atp.upol.cz](http://studuj.atp.upol.cz)).  
Podrobné informace o **studijních oborech** a o **přijímacích zkouškách**.

Information in ENGLISH for foreign prospective students is available [here](#).

**14** únor

**Studentská politologická konference**  
14. 2.  
09:00 – 16:15

**4 E** | **Philosophia**

# Moodle (learning platform)

[www.moodle.upol.cz](http://www.moodle.upol.cz)

- we use Moodle to share teaching materials with the students.
- login the same as in the PU Portal;
- problem: you must be enrolled in Stag for the course to have access to the course materials. Teachers can add you manually as Student-Asynchron, but you have to log in first so that Moodle knows you.

# moodle.upol.cz

- moodle.upol.cz

Jednotné přihlášení  
Univerzita Palackého v Olomouci

Přihlášení ke službě Aplikace pro  
e-learning

Uživatelské jméno



PORTAL NAME

Heslo



PORTAL PASSWORD



Přihlásit

LOGIN

# Courses usually available every semester

Obligatory courses (see below) are usually taught every semester, while the choice of the optional ones may vary.

Check with the timetable:

what's not in the timetable is **not taught** this semester

(but see below for the information on exams and research seminars)

# Literature: Obligatory (survey) courses

Course Code	Course Title	Credits	Teaching hours: lecture+ seminar	Assessment	Recommended esp. for:
KAA/UL00	Introduction to the Study of Literature	4	1+1*	PC, EX	BA
KAA/BRL1	British Literature 1 (1800-1900)	4	0+2	PC	BA
KAA/BRL2	British Literature 2 (1900-1950)	4	0+2	PC	BA
KAA/BRL3	British Literature 3 (until 1800)	4	0+2	PC	MA
KAA/BRL4	Contemporary British Literature	4	0+2	PC	MA
KAA/AML1	American Literature 1 (until 1880)	4	0+2	PC	BA
KAA/AML2	American Literature 2 (1880-1945)	4	0+2	PC	BA
KAA/AML3	American Literature 3 (after 1945) <b>Advanced MA course</b>	4	0+2	PC	MA
KAA/AML4	Contemporary American Literature (after 1945)	4	0+2	PC	MA

\*with this course it is necessary to take the lecture and seminar simultaneously in one semester

# Literature: optional courses

(the choice may vary)

Course Code	Course Title	Credits	Extent: lecture+ seminar	Assess- ment	Recom- mended esp. for:
KAA/APOS	American Postmodernism	4	0+2	c	MA
KAA/BS00	Shakespeare- tragedies	4	0+2	c	BA/MA
KAA/BS00	British Satire	4	0+2	c	BA/MA
KAA/BS00	Children's Literature	4	0+2	c	BA/MA
KAA/FANT	Literature of the Fantastic	4	0+2	c	BA/MA
KAA/IRL1	Irish Literature	4	0+2	c	BA/MA
KAA/KAL2	Chapters from Am. Lit: American Short Story	4	0+2	c	BA/MA
KAA/LITK	Theory of Lit. Interpretation	4	0+2	c	MA
KAA/LK03	Literature Colloquium	4	0+2	c	BA/MA
KAA/SLAM	Slam Poetry	4	0+2	c	BA/MA
KAA/SOUT	Southern Literature	4	0+2	c	BA/MA

# KAA/ERAS Introduction to Czech Culture for Foreign Students

This course is designed for visiting foreign students who would like to learn more about the culture of the Czech Republic.

The course will take place **every other week**. There will also be mandatory field trips to museums, exhibitions and places of interest. In order to receive credit for the course students will have to participate in class, attend regularly (80%) and write a diary of their experience during their stay.

Students should have at least a medium B2 level of English. The course is will be taught by Dr. David Livingstone.

Registration in the class will be dealt with the first day.

# Literature: Exams

Code	Course Title	Credits	Assessment	Prerequisite Courses
KAA/BL1Z	Brit. Literature until 1950: Comprehensive Exam	2	EX	BRL1 or BRL2 and UL00
KAA/BL2Z	British Literature: Exam	1	EX	BRL3 or BRL4
KAA/BL3Z	British Literature: Exam	1	EX	BRL3 or BRL4
KAA/AL1Z	American Literature until 1945: Comprehensive Exam	2	EX	AML1 or AML2 and UL00
KAA/AL2Z	American Literature: Exam	1	EX	AML3 or AML4
KAA/AL3Z	American Literature: Exam	1	EX	AML3 or AML4
KAA/TELZ	Literary Criticism	1	EX	LITK

**(THESE ARE NOT TAUGHT COURSES, BUT EXAMS WHICH MAY BE TAKEN AFTER THE COMPLETION OF THE PREREQUISITE COURSES)**



# Culture studies

Course Code	Course Title	Credits	Extent: lecture+ seminar	Assess- ment	Recom- mended esp. for:
KAA/BS1H	British Studies 1: History	4	2+0	c	BA/MA
KAA/BS2M	British Studies 2: Modern Br. Society	4	2+0	c	BA/MA
KAA/BS3G	British Studies 3: Cultural Geography	4	2+0	c	BA/MA
KAA/AS1H	American Studies 1: Am. History	4	0+2	c	BA/MA
KAA/AS2M	American Studies 2: Modern Am. Society	4	0+2	c	BA/MA
KAA/AS3G	American Studies 3: Cultural Geography	4	0+2	c	BA/MA
KAA/AS00	Chapters from American Culture	4	0+2	c	BA/MA
KAA/AS00	American Folk Music	4	0+2	c	BA/MA
KAA/SK01	Scottish Studies 1	4	0+2	c	BA/MA
KAA/SK02	Scottish Studies 2	4	0+2	c	BA/MA
KAA/IS01	Irish Studies 1	4	0+2	c	BA/MA
KAA/IS02	Irish Studies 2	4	0+2	c	BA/MA

# Culture studies: Exams

Code	Course Title	Credits	Assessment	Prerequisite Courses
<b>KAA/KSZ1</b>	<b>Cultural Studies 1: Exam</b>	<b>2</b>	<b>EX</b>	<b>AS1H or AS2M or AS3G or BS1H or BS2M or BS3G</b>
<b>KAA/KSZ2</b>	<b>Cultural Studies 2: Exam</b>	<b>1</b>	<b>EX</b>	<b>CS01 or CS02 or IS01 or IS02 or SK01 or SK02</b>

**(THESE ARE NOT TAUGHT COURSES, BUT EXAMS WHICH MAY BE TAKEN AFTER THE COMPLETION OF THE PREREQUISITE COURSES):**

# Linguistics: Obligatory (survey) courses

Course Code	Course Title	Credits	Extent: lecture+ seminar	Assess- ment	Recom- mended esp. for:
KAA/UJ00	Introduction into Linguistics	4	1+1*	c, EX	BA
KAA/APGR	Practical English Grammar	3	0+2	c	BA
KAA/AFO1	Phonetics (lecture)	4	2+0	c	BA
KAA/AFO2	Phonetic Seminar	4	0+2	c	BA
KAA/FOAN	English Phonetics	4	0+2	c	BA
KAA/AMOR	Morphology	4	2+0	c	BA
KAA/AMOS	Morphosyntax	4	0+2	c	BA
KAA/SNT1	Syntax 1	4	0+2	c	BA
KAA/LEX1	Lexicology and Lexicography	4	0+2	c	BA
KAA/STL1	Introduction to Stylistics	4	0+2	c	BA
KAA/ SNT2	Syntax 2	4	0+2	c	MA
KAA/FUNS	Functional Styles in English	4	0+2	c	MA
KAA/VYTX	Text Analysis	4	0+2	c	MA
KAA/HANG	Historical Development of English <b>Advanced MA course</b>	4	2+0	c	MA

\*with this course it is necessary to take the lecture and seminar simultaneously in one semester

# Linguistics: Options

(the choice may vary)

<b>Course Code</b>	<b>Course Title</b>	<b>Credits</b>	<b>Extent: lecture+ seminar</b>	<b>Assess- ment</b>	<b>Recom- mended esp. for:</b>
<b>KAA/AF10</b>	<b>Varieties of English Pronunciation</b>	<b>4</b>	<b>0+2</b>	<b>c</b>	<b>MA</b>
<b>KAA/AFO4</b>	<b>Topics in Phonetics</b>	<b>4</b>	<b>0+2</b>	<b>c</b>	<b>BA/MA</b>
<b>KAA/KOR1</b>	<b>Corpus Linguistics</b>	<b>4</b>	<b>0+2</b>	<b>c</b>	<b>BA/MA</b>
<b>KAA/LUTY</b>	<b>Language Universals and Typology</b>	<b>4</b>	<b>0+2</b>	<b>c</b>	<b>MA</b>
<b>KAA/PRAG</b>	<b>Introduction into Pragmatics</b>	<b>4</b>	<b>0+2</b>	<b>c</b>	<b>MA</b>
<b>KAA/SEM1</b>	<b>Lexical Semantics</b>	<b>4</b>	<b>0+2</b>	<b>c</b>	<b>MA</b>

# Linguistics: Exams

Code	Course Title	Credits	Assessment	Prerequisite Courses
<b>KAA/LESZ</b>	<b>Lexicology and Stylistics</b>	<b>2</b>	<b>EX</b>	<b>LEX1 or STL1</b>
<b>KAA/AFO3</b>	<b>Phonetics: Exam</b>	<b>2</b>	<b>EX</b>	<b>AFO1 or AFO2 and UJ00</b>
<b>LIA1</b>	<b>Linguistic analysis 1</b>	<b>1</b>	<b>EX</b>	<b>HANG or SNT2 or AF10</b>
<b>LIA2</b>	<b>Linguistic analysis 2</b>	<b>1</b>	<b>EX</b>	<b>HANG or SNT2 or AF10</b>
<b>KAA/GRFZ</b>	<b>Grammar for Philologists: Exam</b>	<b>2</b>	<b>EX</b>	<b>AMOR &amp; AMOS &amp; SNT1</b>
<b>KAA/ANT1</b>	<b>Text Analysis 1: Exam</b>	<b>1</b>	<b>EX</b>	<b>FUNS or VYTX or SEM1</b>
<b>KAA/ANT2</b>	<b>Text Analysis 2: Exam</b>	<b>1</b>	<b>EX</b>	<b>FUNS or VYTX or SEM1</b>

**(THESE ARE NOT TAUGHT COURSES, BUT EXAMS WHICH MAY BE TAKEN AFTER THE COMPLETION OF THE PREREQUISITE COURSES)**

UJoo: Introduction into Linguistics (lecture + seminar): the number of places is limited; if you are interested, contact Dr Podlipsky ASAP at [vaclav.j.podlipsky@upol.cz](mailto:vaclav.j.podlipsky@upol.cz)

# Research seminars

**LRRS<sub>1/2</sub>: Literature Research Seminar 1/2**

**LGRS<sub>1/2</sub>: Linguistics Research Seminar 1/2**

- not taught (not in the timetable)
- 3 credits each
- an extra assignment in one of the literature/culture studies and linguistics courses, respectively (NOT in Practical English courses)
- you can take one in literature/culture studies and one in linguistics per semester
- ask the teachers about the topics in advance
- you cannot sign up for these in STAG, so ask the relevant teacher for approval AND THEN contact the English dept. coordinator

# Practical English: Courses

Course Code	Course Title	Credits	Extent: lecture+ seminar	Assess- ment	Recom- mended esp. for:
KAA/AJC1	English Language 1	3	0+2	PC	BA
KAA/AJC2	English Language 2	3	0+2	PC	BA
KAA/AJC3	English Language 3	3	0+2	PC	BA
KAA/AJC4	English Language 4	3	0+2	PC	BA
KAA/AJC5	English Language 5	3	0+2	PC	BA
KAA/AJC6	English Language 6	3	0+2	PC	MA
KAA/AJC7	English Language 7	3	0+2	PC	MA
KAA/AJC8	English Language 8	3	0+2	PC	MA

AJC1: Academic writing

AJC2: Presentations

AJC3-8: *CAE result; Proficiency Masterclass*

**You can take any of those course in any order (i.e. you can only take e.g. AJC3 without taking AJC1 and AJC2)**

Contact Helena Tylšarová at [helena.tylsarova@upol.cz](mailto:helena.tylsarova@upol.cz) if you have any questions regarding these courses



# Practical English: Exams

Code	Course Title	Credits	Assessment	Prerequisite Courses
KAA/JZB2	Comprehensive Practical English Exam B2	2	EX	AJC1 or AJC2
KAA/JZC1	Comprehensive Practical English Exam C1	2	EX	AJC3 or AJC4 or AJC5
KAA/JZC2	Comprehensive Practical English Exam C2	2	EX	AJC6 or AJC7

**(THESE ARE NOT TAUGHT COURSES, BUT EXAMS WHICH MAY BE TAKEN AFTER THE COMPLETION OF THE PREREQUISITE COURSES)**

Contact Helena Tylšarová at [helena.tylsarova@upol.cz](mailto:helena.tylsarova@upol.cz) if you have any questions regarding these exams

# So what to do next? (1)

1. in the timetable, check what is actually taught this semester and compare it with the Before mobility section of your LA
2. make a list of courses you would like to attend
3. consult your choice of courses taught at the English department with the department coordinator (Markéta Janebová) and then
4. sign up in the PU Portal, or, if the course is full or there is a problem with the registration, wait for the first lesson
5. go to the first lesson to learn more about the course (**do not miss the first lesson** even if you have signed up in STAG) and talk to the teacher to find out whether the course is suitable for you
6. if you can attend the course and the capacity is still full, wait for the second week of the semester. The capacity will be increased for international students. Sign up in STAG, or, if there is still a problem, contact the coordinator.

# So what to do next? (2)

7. After finalizing the list of courses, make changes in the Learning agreement form, have it signed by both parties and upload it in the Erasmusplus app ([erasmusplus.upol.cz](https://erasmusplus.upol.cz)) in due time
8. Enjoy your stay😊

Thank you  
and enjoy your stay in Olomouc!

